

WEEK-END RACING RESULTS

TAYLOR BREAK SUCCEEDS

GIL Taylor, Concorde C.R.C., attacked at the start of the Walsall R.C.C. 60-mile road race with B. Rourke, Turnstall Wh., R. Minovi, Worcester St. John's C.C., and others, on Sunday. A chasing group included T. Bamford, Walsall R.C.C., and J. Gilkes, Bilston Coureurs. Taylor won four primes, and only 22 of the 40 starters finished.

G. Taylor, Concorde C.R.C., 2-36-31, 1; R. Minovi, Worcester St. John's C.C., at 32 sec.; 2; B. Rourke, Tunstall Wh., at 32 sec.; 3; T. Bamford, Walsall R.C.C.; 4; D. Gair, Birmingham St. Christopher's C.C.C.; 5; M. Hesson, Wolverhampton Wh.; 6; J. Gilkes, Bilston Coureurs; 7; B. Bourne, Saracen C.R.C.; 8. Team.—Wolverhampton Wh. (M. Hesson, A. Hodgetts, H. Porter).

HILL CLIMBER FIRST

BRAMLEY WH. hill-climb star, Vaughan Caswell, and Tyneside star, Tommy McSkimmings, Tyne Velo, dominated the Leeds University road race. They broke away together in the first lap, and after being caught went away again in the second and last lap to spread the field.

V. Caswell, Bramley Wh., 1-45-0, 1; T. McSkimmings, Tyne Velo, at 3 lengths; 2; C. Christie, Leeds C.R.C. at 3sec.; 3; P. Buddis, East Bradford C.C., at 23 sec.; 4; E. Hodgson, Tyne Velo C.C.; 5; D. Lambert, Penine C.C.; 6. Team.—Tyne Velo, 17 pts.

MASON 1st AND 2nd

SHEFFIELD RACING C.C. star, Wesley Mason, made a fast chase of a leading trio to win the Sheffield University C.C. Spring road race over a Derbyshire circuit of 42 miles after puncturing three miles from the finish.

The previous day in the Loughborough Colleges C.C. carnival criterium, Mason finished second to Pete Gordon, Manchester Wh., who crossed the line 39 sec. ahead.

W. Mason, Sheffield Racing C.C., 1-58-0, 1; R. Pyne, Barnsley R.C., at one wheel; 2; M. Harpham, Sheffield Phoenix C.C., at 1 length; 3; A. Beech, Scala Wh., at 1 1/2 lengths; 4; B. Marton, Rutland C.C., at 15 sec.; 5; M. Marples, N. Notts Olympic R.C., 6. Team.—Sheffield Sports C.C.

P. Gordon, Manchester Wh., 1-45-42, 1; W. Mason, Sheffield Racing C.C., at 39 sec.; 2; A. Middlemiss, Sheffield Sports C.C., at 1/2 length; 3; J. Price, Leicestershire R.C.C.; 4; D. Caldicott, Leicestershire R.C.C.; 5; J. Aslin, Long Eaton C.C., 6.

TIME TRIALS

FIRST OPEN "10" IN NORTHERN IRELAND

E. Mark, Ballymena R.C. ... 26 0
J. Fennell, Route Wh. ... 26 42
H. Simpson, Kings Moss ... 27 2
S. Kerr, Ballymena R.C. ... 27 4
D. Kane, Northern ... 27 20
Team.—Ballymena R.C. This event, held on Saturday, March 3, was the first open "10" promoted in Northern Ireland.

OVERSEAL C. & A.C. "25"

(Medium gear)
R. Miller, Swadlincote Wh. ... 1 5 13
R. House, Rykneld R.C. ... 1 7 3
G. Smith, Coalville Wh. ... 1 9 47
J. Woolley, Rykneld R.C. ... 1 10 1
S. Crofts, Swadlincote Wh. ... 1 14 15
M. Wood, Swadlincote Wh. ... 1 15 28
Team.—Swadlincote Wh., 3-34-56.

COVENTRY C.C.A. "25"

(Course 1,500yd. short)
R. Plaice, Warwick C.C. ... 1 2 16
A. Collins, Rugby R.C.C. ... 1 2 20
R. T. Lane, Warwick C.C. ... 1 2 20
R. T. Catling, Godiva R. & P.C. ... 1 3 29
W. Stevenson, Warwick C.C. ... 1 4 16
R. E. Wilkes, Coventry Para. C.C. ... 1 4 59
B. R. King, Coventry C.C. ... 1 5 27
P. B. Price, Coventry Para. C.C. ... 1 5 32
C. F. Nicholls, Warwick C.C. ... 1 5 32
H'cap.—A. Jackson, Coventry C.C. (10), 56-5. Team.—Warwick C.C., 3-9-18.

SOUTHERN COUNTRIES C.U. "25"

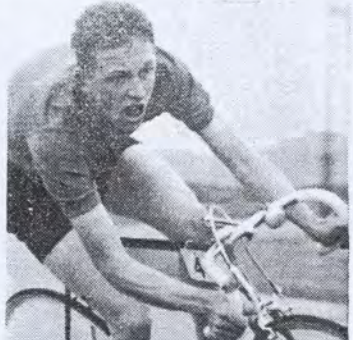
I. Fisher, East Surrey R.C. ... 1 2 36
R. A. Chittiborough, De Laune R. ... 1 3 58
R. V. Runham, Fountain C.C. ... 1 4 21
D. R. Funnell, Worthing Excel ... 1 4 27
M. G. Pocknaill, Bec C.C. ... 1 4 52
R. Brake, East Surrey R.C. ... 1 4 57
P. Mayhew, Redmon C.C. ... 1 5 26
I. D. McCall, Festival R.C. ... 1 5 41
H'cap.—D. R. Funnell (41), 59-57.
Team.—East Surrey R.C., 3-14-46.

KENT C.A. "25"

A. E. Ambrose, West Kent R.C. ... 1 6 39
P. S. Gooch, Catford C.C. ... 1 6 53
B. J. Cameron, Bromley R.C. ... 1 7 20
D. A. Branson, Ruxley Wh. ... 1 7 32
J. L. Potts, Catford C.C. ... 1 9 47
G. F. Smith, Bromley R.C. ... 1 11 0
I. Record, Thames R.C. ... 1 11 0
H'cap.—R. J. Brookes, Long Valley C.C. (9), 1-3-48. Team.—Thames R.C., 1-34-24.

MIDLAND COUNTIES C.A. "25"
D. Rigby, Wyndham R.C.C. ... 1 4 39
S. McDonnell, St. Christopher's ... 1 4 49
I. Edwards, Warwicks R.C. ... 1 6 8
B. Newton, Kynoch C.C. ... 1 6 27
J. Shaw, Solihull C.C. ... 1 6 43
R. Monk, Warwicks R.C. ... 1 6 59
D. Cox, Wyndham R.C.C. ... 1 7 15
B. Styles, Midland C. & A.C. ... 1 7 41
H'cap.—J. Yarnold, Birmingham St. Christopher's C.C.C. (14-15), 59-37.
Team.—Wyndham R.C.C., 3-22-2.

N. MIDDLESEX & HERTS C.A. "25"
A. F. Pollard, Star C.C. ... 1 3 46
J. T. Hanlon, North London C.C. ... 1 4 4
N. A. Poole, Hemel Hempstead ... 1 4 46
S. R. Beirne, Letchworth Velo ... 1 4 51
B. M. Mangan, Century R.C. ... 1 5 46
M. J. Fone, Priory Wh. ... 1 7 25
M. J. Smith, Priory Wh. ... 1 7 15
I. K. O'Connor, Polytechnic C.C. ... 1 7 53
H'cap.—M. J. Fone, Priory Wh. (7), 1-9-25. Team.—Welwyn Wh., 3-32-50.



A. Shackleton, won the Nunbrook "25" on Sunday.

BURTON AND DISTRICT C.A. "25"
(Gears restricted to 72in.)
R. Miller, Swadlincote Wh. ... 1 5 13
R. House, Rykneld R.C. ... 1 7 3
G. Smith, Coalville Wh. ... 1 9 42
J. Woolley, Rykneld R.C. ... 1 10 1
S. Crofts, Swadlincote Wh. ... 1 14 15
M. Wood, Swadlincote Wh. ... 1 15 28
Team.—Swadlincote Wh., 3-34-56.

LINCOLN C.A. Hilly "40"
A. Wright, Witham Valley R.C. ... 1 57 4
J. Kermod, Witham Valley R.C. ... 2 1 53
K. Carlton, Lincoln Wh. ... 2 3 43
P. Griffin, Witham Valley R.C. ... 2 5 15
B. Mann, Witham Valley R.C. ... 2 5 28
M. Griffin, Witham Valley R.C. ... 2 5 32
Team.—Witham Valley R.C., 6-4-12.

EAST SUSSEX C.A. "25"
R. French, Hastings C.C. ... 1 5 21
C. Snelling, Eastbourne Rovers ... 1 5 44
M. Wren, Central Sussex C.C. ... 1 6 0
M. Robinson, East Grinstead C.C. ... 1 6 26
T. Bartlett, Eastbourne Rovers ... 1 6 34
L. Chambers, Hastings & St. Leon's ... 1 6 54
D. Hamilton-Webb, Uckfield & Dist. ... 1 7 45
G. Ford, Tunbridge Wells R.C. ... 1 8 9
H'cap.—A. Palmer, Lewes Wh. (9), 1-0-55. Team.—Hastings and St. Leonards C.C., 3-20-56.

WOMEN'S EVENTS

EAST SUSSEX C.A. "10"
V. Basendine, East Grinstead C.C. ... 29 10
H. Oliver, East Grinstead C.C. ... 30 22
I. Stevens, Eastbourne R. C.&A.C. ... 30 44
H'cap.—H. Oliver, East Grinstead C.C. (3), 26-52.

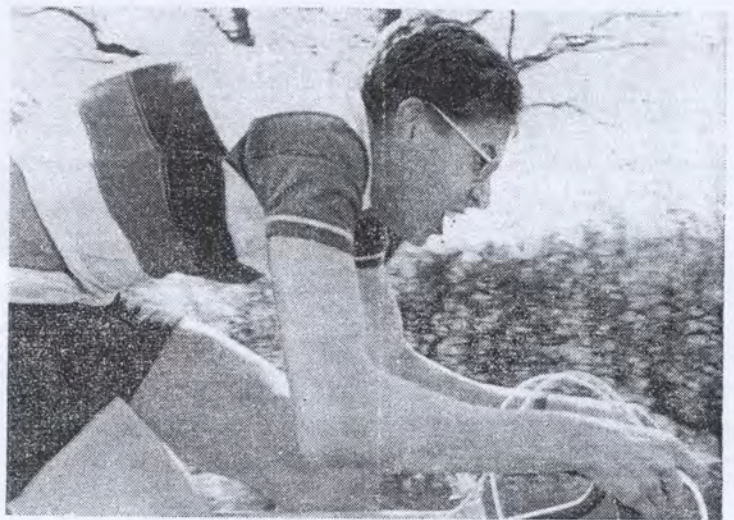
MIDLAND COUNTIES C.A. "10"
J. Smith, Long Eaton C.C. ... 27 7
J. Bateman, St. Christopher's ... 29 9
E. Robinson, Long Eaton C.C. ... 29 15
D. Unwin, Coventry R.C. ... 29 19
D. Tomlinson, Solihull C.C. ... 29 50
I. Green, De Montfort Ladies ... 30 22
H'cap.—J. Green (5-45), 24-37. Team.—Long Eaton C.C., 56-22.

SOUTH STAFFS C.A. "10"
J. M. Pritchard, Oldbury & Dist. ... 29 0
S. Crow, Wolverhampton ... 29 1
H'cap.—S. Crow, Wolverhampton (1), 28-46.

IN SCOTLAND

JOHNSTONE WH. "10"
T. Ross, Bathgate Wh. ... 24 16
N. Molyneux, Lomond Roads ... 24 17
I. Letch, Lomond Roads ... 24 38
F. Connell, Belleisle R.C. ... 25 0
E. C. Brown, Stirlingshire R.C. ... 25 5
F. Murray, Belleisle R.C. ... 25 7
H'cap.—G. McLaughlan, Law Wh. (3), 23-26. Team.—Lomond Roads, 1-15-8.

CUMNOCK R.C. "10"
J. Smith, Cumnock R.C. ... 24 3
J. McGinty, Regent C.C. ... 24 34
F. Smith, Wallacchill C.C. ... 24 59
T. Foster, Cumnock R.C. ... 25 4
H'cap.—A. Allan, Kilbirnie Wh. (2-40), 23-58. Team.—Cumnock R.C., 1-14-29.



Gil Taylor, Walsall road race winner.

Leaders Fall on Brighton Front

JOHN CLAREY, Cambrian Wh., winner of the 75-mile Norwood Paragon C.C. Brighton Trophy road race in the record time of 2h. 48m. 20s., was by common consent of riders and officials, fully deserving of his victory on Sunday. This was a race of constant high speed, with a north-east wind which favoured the coastal finishing miles. From a group of 13 riders Clarey snatched a length lead from past winner Barry Willoughby, Croydon R.C., with the rest of the winning group close behind. Throughout the race he was in constant command of every situation, taking the first and last of the four primes and the king of the mountains prize.

Riding reserve on the programme, Robin Buchan, Norwood Paragon, gave his best bunched performance to date, but failed to produce his track sprint at the end. He was feeling the effects of the 25 m.p.h. average speed and the hard climbs over the South Downs.

With half a mile to go to the

finish, Keith Butler (hoping for a top placing as a start to a good season) fell, as did three others, and suffered minor abrasions. Replacing his chain and remounting he eventually took 14th position, 32 seconds back. Another casualty at the same point, Jim Wheeler escaped lightly with a cut lip and finished as a motor cycle pillion passenger. Butler was in the most dangerous break at the hill out of the port of Newhaven shortly after the level crossing, a break of four that included the inevitable Clarey, Mike Barry, Morden C.R.C., and third man M. Smith, Wembley R.C. It looked the winning move, but after some fierce chasing from the back it was brought back after 3 1/2 miles.

J. Clarey, Cambrian Wh., 2-48-20, 1; B. Willoughby, Croydon R.C., at length; 2; M. Smith, Wembley R.C., at 1-length; 3; R. W. Buchan, Norwood Paragon C.C., at 1-length; 4; M. Shea, Ross Wh.; 5; J. Hinds, Southern Roads; 6; R. Addy, Ross Wh.; 7; R. Jarvis, Highgate C.C.; 8; M. Aylife, Clarendon C.C.; 9; N. Pearce, Southern Roads; 10; N. Crane, Boston Wh.; 11; J. Lowrance, W. Kent R.C.; 12.

LONDON COUREURS 48m. (March 4). —J. Cleary, Cambrian Wh., 2-1-3, 1; A. Jacob, ind., at 2 lengths; 2; P. Hatch, W. Kent R.C., at 10 sec.; 3; P. Purslove, ind.; 4; J. Kilby, ind.; 5; I. Moore, ind., 6.

ORPINGTON C.R.C. 44m.—G. Drewett, London Coureurs, 2-8-0, 1; J. Barnes, Vulcan C.R.C., at 1-10, 2; P. Burgess, Old Portlians' C.C., at 2-15, 3. Team.—Wigmore C.C.

NONSUCH R.C. 50m.—J. Moore, C.C. Islington, 2-19-0, 1; B. Stocker, 29th Wh., at inches; 2; B. Aldridge, Croydon Racing C., at inches; 3. Team.—Nonsuch R.C. JUNIOR 35m.—M. Cross, Thames Velo, 1-35-0, 1. Team.—Thames Velo.

PLYMOUTH C.C. 44m.—C. Lewis, Mid Devon R.C., 1-51-32, 1; E. Smith, St. Budeaux C.C., at 3 min.; 2; P. Treliving, Plymouth C.C., at 1-wh.; 3; D. Morris, Effords Wh.; 4; J. Watts, Plymouth C.C.; 5; G. Jenkins, St. Budeaux C.C., 6. Team.—Plymouth.

RIBBLE VALLEY C.R.C. 50m.—E. Bates, Southport R.C., 1-53-0, 1; P. Cass, Lune R.C., at 3 sec.; 2; K. Spencer, North Lanes R.C., at 6 sec.; 3; D. Williams, Irwell Valley R.C.; 4; M. Cowley, Derwent Valley Wh.; 5; R. Quayle, Manx R.C., 6. Team.—Composite "A".

THORNHILL C.C. 54m.—A. Hitchen, Falcon Cycles, 2-3-0, 1; R. Coe, ind., at lengths; 2; W. Painter, Wolverhampton R.C., at 1 length; 3; J. J. Perks, ind.; 4; H. T. Reynolds, ind.; 5; S. Ryan, ind.; 6.

EKE VALLEY R.C. 50m.—E. Smith, St. Budeaux C.S., 2-11-17, 1; N. Harvey, Kingswood R.C., at 1 length; 2; B. Sandy, Western R.C., at 1 length; 3; C. Lewis, Mid-Devon R.C.; 4; D. MacLeod, Ist Chard Wh.; 5; C. Robinson, Exeter Wh.; 6. Team.—Plymouth C.C.

BOHEMIAS C.C. (H'CAP) 31m.—W. McGrath, Harp R.C. (6), 1-24-45, 1; A. Finn, St. Patrick's C.C. (6), 2; M. O'Donoghue, United R.C. (6), 3. Team.—St. Patrick's.

NIGHTINGALE C.C. two-man t.t. 35-m.—F. Connell - N. McDonald, 1-37-17, 1; J. J. Harris - T. Brannon, West Clarion, 1-38-51, 2; J. Thomson - W. Kemp, Belleisle R.C., 1-41-15, 3; John Ritchie - Jim Ritchie, Denny R.C., 1-31-34, 4; J. Hay - W. Bilsland, Nightingale C.C., 1-42-4, 5; J. Linden - A. McKenzie, Belleisle R.C., 1-44-57, 6.

ROAD RACES

R.C.F. COVENTRY DIVISION 45m.—L. Newell, Rugby R.C.C., 1-46-47, 1; J. Grieves, ind., at 1/2 length; 2; M. Ives, Coventry C.C., at 1 length; 3; M. Jenkins, Rugby R.C.C.; 4; R. Newell, Rugby R.C.C.; 5; D. Dood, Three Spire R.C.; 6. Junior 30m.—C. Groom, Coventry C.C., 1-15-38. Intermediate Race 45m.—D. Jagger, Coventry R.C., 1-53-44.

RAPIER R.C. 45m.—D. Whybrow, Southend and County Wh., 2-12-45, 1; D. Cowles, East Anglian C.C., s.t.; 2; E. McDonald, De Laune C.C., s.t.; 3; R. St. Pierre, Zeus R.C.; 4; H. Parsons, Southend and County; 5; I. Simpson, Romford Wh., 6.

FULLARTON WH. AUSTRALIAN PURSUIT 30m.—K. Patterson, Ayr R.C., 1-1-3, 1; D. L. McPherson, Royal Albert C.C., at 5 sec.; 2; Glasgow United C.C., at 6 sec.; 3; K. Harvey, Ayr R.C.; 4; M. Stewart, Regent C.C.; 5; A. McEwan, Fullarton Wh., 6.

WHITE HART, 58m.—F. Deeley, De Laune C.C., 2-31-0, 1; F. Weare, C.C. Islington, at 1 length; 2; B. Carter, Carlyle C.C., at 1/2 length; 3. Team.—C.C. Islington.

FOREST OF BERE, 69m.—W. R. Lievesley, Brighton Velo C.C., 3-14-15, 1; K. Daniels, Willesden C.C., at 1 length; 2; R. Cromack, Southampton University C.C., at inches; 3. Team.—Coinbrook R.C.

IRISH R.C. (H'cap) 50m.—R. Auld, Northern C.C. (2-30), 2-7-25, 1; V. Higgins, Dublin Wh. (7-30), at 1-length; 2; T. Donnellan, Eagle C.C. (7-30), at 1-3.